

GRAPHIC SCALE



(IN FEET)
1" = 20'

GREMLEY & BIEDERMANN

A DIVISION OF
PLCS Corporation

PROFESSIONAL LAND SURVEYORS

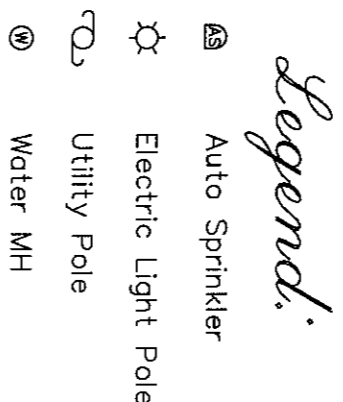
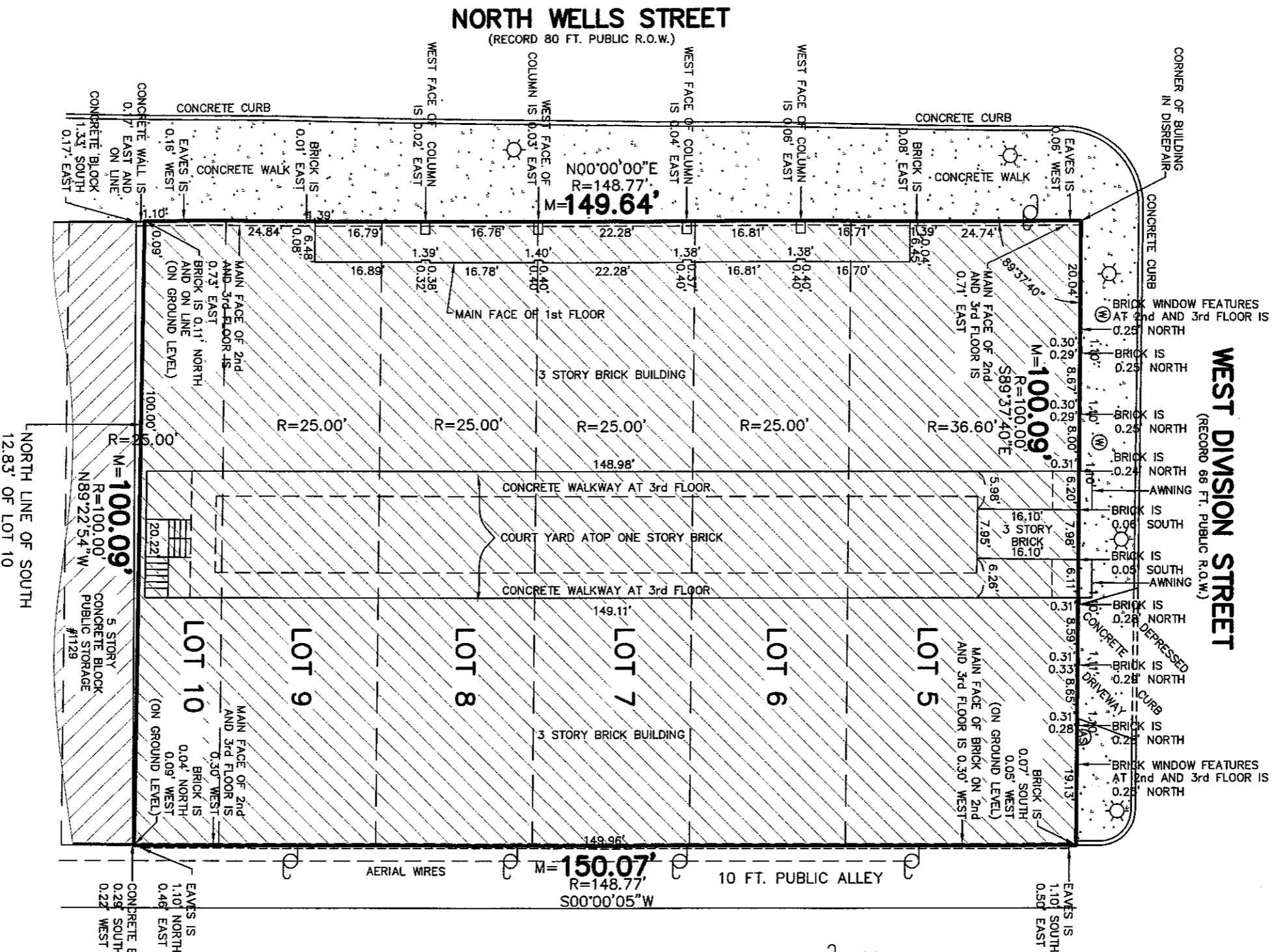
4505 NORTH EASTON AVENUE, CHICAGO, IL 60650
TELEPHONE: (773) 685-5102 FAX: (773) 286-4184 EMAIL: INFO@PLCS-SURVEY.COM

PLAT OF SURVEY

Lots 5 through 9, both inclusive, and Lot 10 (except the South 12.83 feet of said Lot) in Block 1 in Johnston, Roberts and Storrs Addition to Chicago, being a subdivision of the West Half of the Southeast Quarter of Section 4, Township 39 North, Range 14, East of the Third Principal Meridian, in Cook County, Illinois.

PROPERTY AREA: 14,998 SQ.FT. OR 0.3443 ACRES

WEST DIVISION STREET
(RECORD 66 FT. PUBLIC R.O.W.)



ORDERED BY: THE BUILDING GROUP
ADDRESS: SE CORNER WEST DIVISION ST. AND NORTH WELLS ST.

GREMLEY & BIEDERMANN
A Division of
PLCS CORPORATION
Professional Land Surveyors
License No. 184-0053322
4505 NORTH EASTON AVENUE, CHICAGO, IL 60650
TELEPHONE: (773) 685-5102 FAX: (773) 286-4184 EMAIL: INFO@PLCS-SURVEY.COM

CHECKED: DRAWN:
R L AF

DATE: JANUARY 20, 2009
SCALE: 1" = 20 FEET
PAGE NO. 1 OF 1

ORDER NO. **2009-12259-001**
G:\CAD\2009\2009-12259\dwg\2009-12259-001.dwg

Note R & M denotes Record and Measured distances respectively.
Distances are marked in feet and decimal parts thereof. Compare all points BEFORE building by same and at once report any differences BEFORE damage is done.
For assessments, building lines and other restrictions not shown on survey plat refer to your abstract, deed, contract, title policy and local building line regulations.
NO dimensions shall be assumed by scale measurement upon this plat.
Monumentation or witness points were not set at the clients request.
Unless otherwise noted hereon the Bearing Basis, Elevation Datum and Coordinate Datum if used is ASSUMED.
COPYRIGHT GREMLEY & BIEDERMANN, INC. 2009 "All Rights Reserved"

State of Illinois)
County of Cook)ss

We, GREMLEY & BIEDERMANN, INC. hereby certify that we have surveyed the above described property and that the plat hereon drawn is a correct representation of said survey corrected to a temperature of 62° Fahrenheit.

Field measurements completed on JANUARY 20, 2009.
Signed on Feb 2, 2009

By: *Robert G. Biedermann*
Professional Illinois Land Surveyor No. 2802
My License Expires November 30, 2010, ILLINOIS
This professional service conforms to the minimum standards for a boundary survey.

