

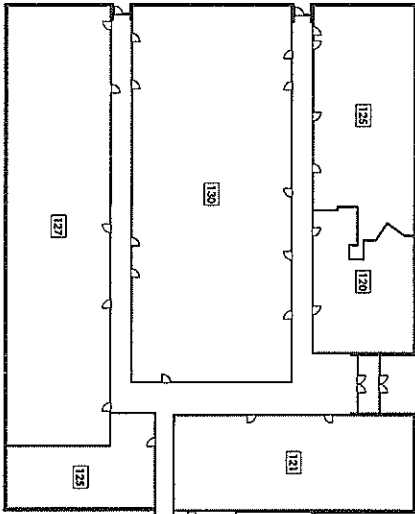
2601-2605 W. Lincoln Highway, Olympia Fields

FLOOR PLAN  
 TOTAL GROSS BUILDING AREA: 45,294 SQ. FT.  
 ABOVE GRADE: APPROX. 30,000 SQ. FT.  
 BELOW GRADE: APPROX. 15,000 SQ. FT.

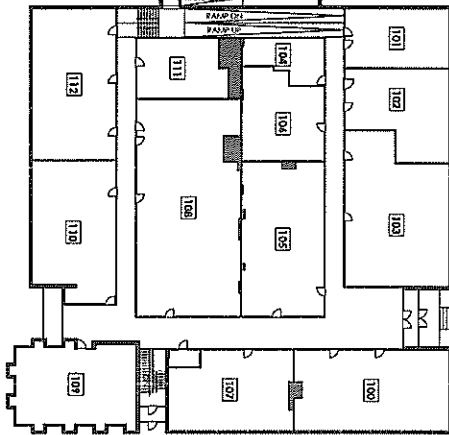


2605 W. LINCOLN HIGHWAY

FIRST FLOOR



2601 W. LINCOLN HIGHWAY



2601 W. LINCOLN HIGHWAY

LOWER LEVEL

