



Residential
Commercial
ALTA

PLAT OF SURVEY

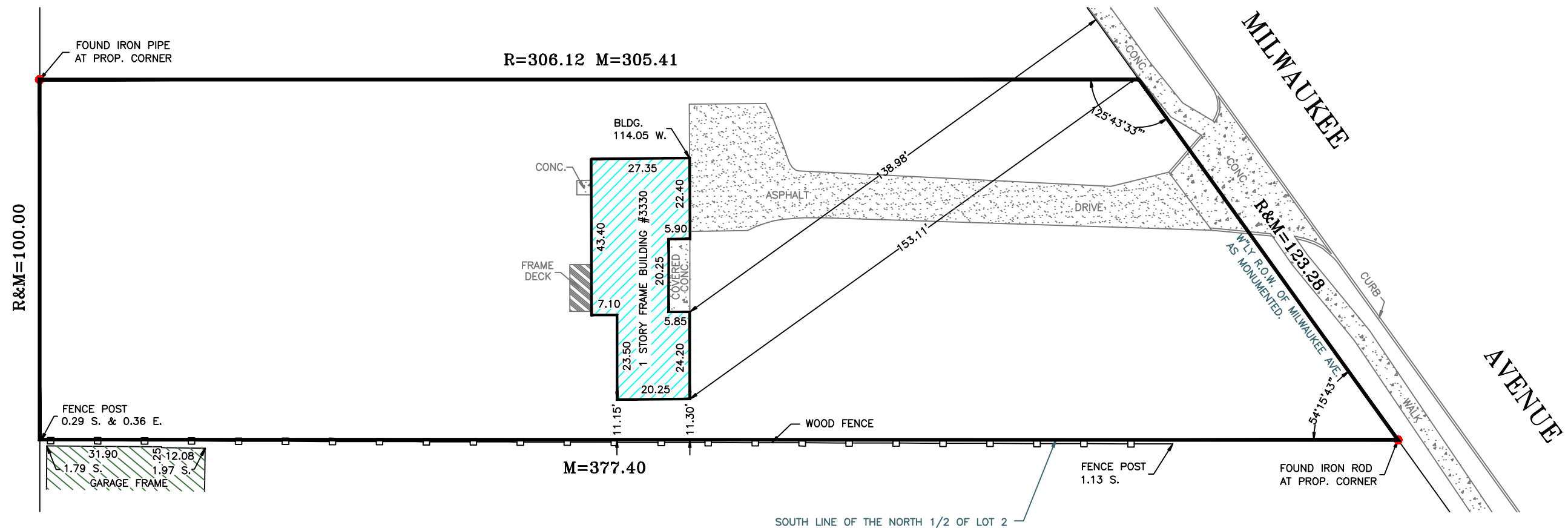
Studnicka and Associates, Ltd.

Topographical
Condominium
Site Plans

Tel. 815 485-0445
Fax 815 485-0528

17901 Haas Road
Mokena, Illinois 60448

THE NORTH 1/2 OF LOT 2



Scale: 1" = 30 feet

Distances are marked in feet and decimals.

Ordered by: Shai Wolkowicki

Order No.: 12-6-128

Compare all points before building by same and at once report any difference.
For building lines, restrictions, or easements not shown hereon, refer to abstract, deed or ordinance.

Field work completed: 7/2/12

Drawn by: S. K.

Proofed by: T.S.

Design Firm Registration # 184-002791

L O T 2

STATE OF ILLINOIS }
COUNTY OF WILL } ss

Studnicka and Associates, Ltd., an Illinois Land Surveying Corporation does hereby certify that this professional service conforms to the current Illinois standards for boundary survey.

Mokena, IL, July 3, A.D. 2012

by _____
License No. 3304 Expires 11/30/12