

Peklay Surveying Co. Ltd.
 Professional Design Firm No. 2981
 1810 N. Delany Rd. Ste M
 Gurnee, IL 80031
 (847)336-0059

Final Plat of Resubdivision of Volo Commerce Center Subdivision Phase Two

Being a subdivision of part of the Northwest Quarter of Section 2, Township 44 North, Range 9, East of the Third Principal Meridian, in Lake County, Illinois.
 Covenants & Restriction for this subdivision recorded May 19, 1998, as Document No. 4135743, in Lake County, Illinois.

CURVE TABLE

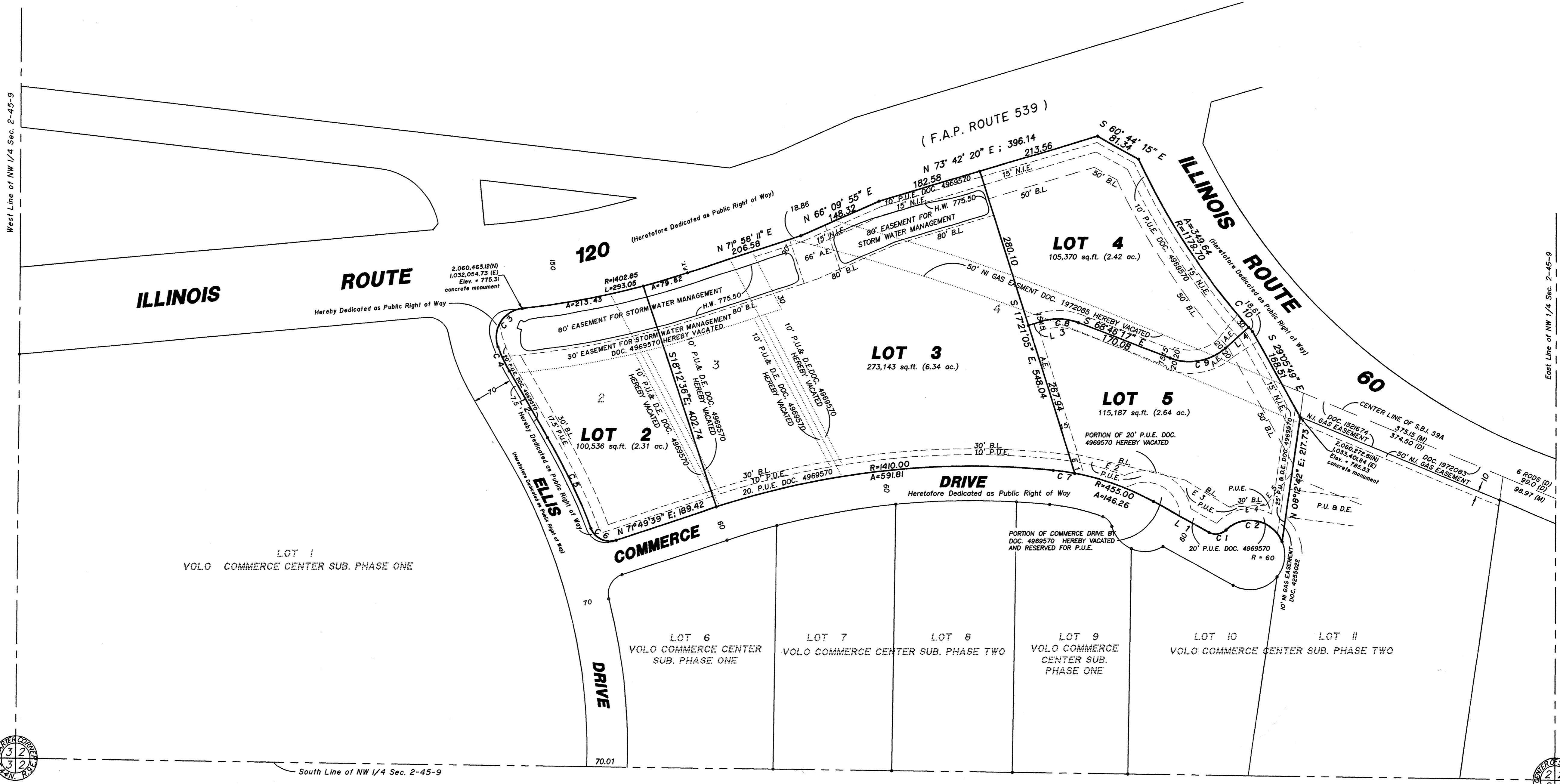
C 1	= 31.80 (A); R = 25.00
C 2	= 116.39 (A); R = 60.00
C 3	= 90.35 (A); R = 50.00
C 4	= 45.80 (A); R = 248.65
C 5	= 174.07 (A); R = 1072.54
C 6	= 53.34 (A); R = 35.00
C 7	= 37.57 (A); R = 455.00
C 8	= 67.33 (A); R = 100.00
C 9	= 102.64 (A); R = 94.00
C 10	= 9.64 (A); R = 1179.70

LINE TABLE

L 1	= N 60°55'49" W; 109.59
L 2	= N 30°09'09" W; 133.01
L 3	= N 72°38'55" E; 21.87
L 4	= N 48°40'05" E; 53.56

EASEMENT LINE TABLE

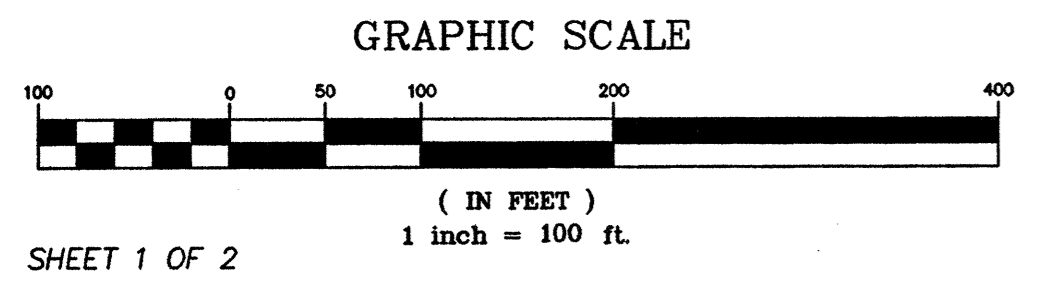
E 1	= N 17°21'05" W; 38.00
E 2	= S 76°37'01" E; 208.24
E 3	= S 58°01'27" E; 90.22
E 4	= N 87°04'40" E; 63.43
E 5	= N 38°35'22" E; 72.46



ALL DISTANCE IN FEET AND DECIMAL PARTS THEREOF, NO DIMENSIONS TO BE ASSUMED BY SCALING.
 FILE NO. 07-67-S

Legend

D= Deed
 M= Measure
 B.L.= Building Line
 A= Arc
 R= Radius
 P.U.E.= Public Utility Easement
 P.U. & D.E.= Public Utility and Drainage Easement
 A.E.= Access Easement
 N.I.E.= Nicor Easement
 Iron bars set at lot corners unless noted otherwise.
 Coordinates shown are U.S.G.S. 1983 Datum (Bearings do not relate to coordinates)
 Elevations shown are N.G.V.D. 1929 Datum



NOTE: THERE SHALL BE NO ACCESS TO IL. ROUTE 120 FROM LOTS 2 AND 4.
 THE ONLY ACCESS TO IL. ROUTE 120 FROM LOT 3 SHALL BE AT THE 66 FOOT WIDE ACCESS EASEMENT
 THE ONLY ACCESS TO IL. ROUTE 60 FROM LOTS 4 & 5 SHALL BE AT THE COMMON LOT LINE ACCESS EASEMENT
 TOTAL AREA OF SUBDIVISION = 13.71 ACRES

Dated: 9/19/07
 Revised 10/15/07