

# PLAT OF SURVEY

by  
**SURVEY SYSTEMS OF AMERICA, INC.**

PROFESSIONAL LAND SURVEYORS

783 S. Eighth St.  
Dundee, Illinois 60118  
Phone: (847) 428-5775



JUL 05 2001

The North 53 feet of Lots 12 and 13 (as a tract) and Lot 14 in J.A. WEBER'S ADDITION TO MOUNT PROSPECT, being a subdivision of part of the East 1/2 of the Northwest 1/4 of Section 12, Township 41 North, Range 11 East of the Third Principal Meridian, in Cook County, Illinois

**Notes !**

Numbered Parking Spaces are Limited Common Elements and shall be assigned to specific Units per Declaration.

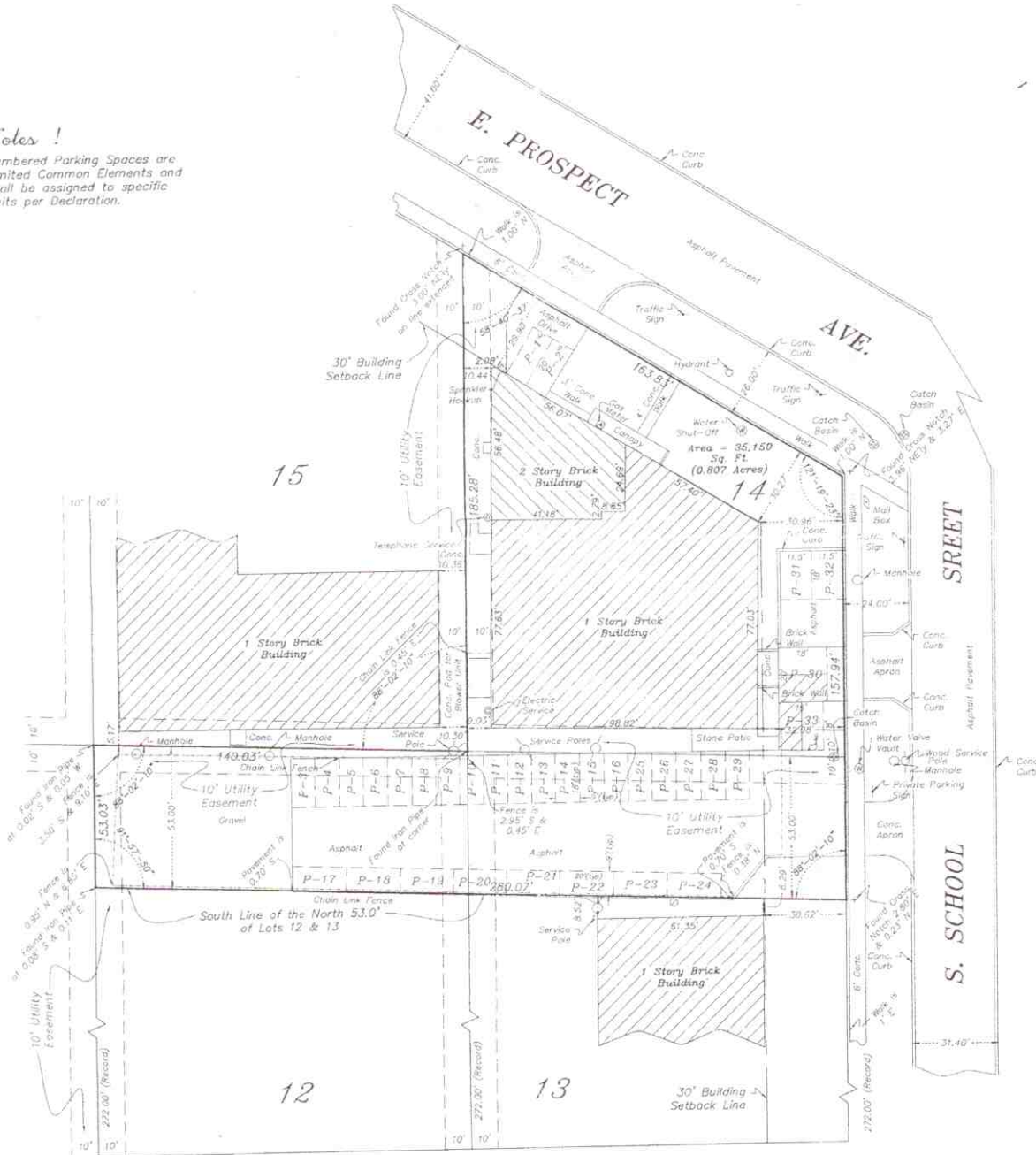


EXHIBIT "A" to  
Declaration of Condominium Ownership for  
**249 E. PROSPECT BUSINESS CENTER CONDOMINIUMS**

**Note !**  
THIS PLAT IS BEING RECORDED IN COMPLIANCE WITH THE ILLINOIS CONDOMINIUM PROPERTY ACT.



Prepared by  
**SURVEY SYSTEMS OF AMERICA, INC.**  
PROFESSIONAL LAND SURVEYORS  
783 S. Eighth St.  
Dundee, Illinois 60118  
Phone: (847) 428-5775  
ORDER NO 012-0748.14 CS

State of Illinois ) s.s.  
County of Kane )

SURVEY SYSTEMS OF AMERICA, INC., does hereby certify that a survey has been made under the direction of an Illinois Professional Land Surveyor, of the property described hereon and that the plat hereon drawn is a correct representation of said survey.

Dundee, Illinois, Dated this 7th day of May, A.D. 2001.



by: *Robert G. Sowka*  
Robert G. Sowka I.P.L.S. No. 2464

Expires 11/30/2002  
PLAT VALID ONLY WITH EMBOSSED SEAL