

BANK OWNED RETAIL CONDO

2009 West Belmont Avenue, Unit 1, Chicago, IL 60618



PROPERTY OVERVIEW

MINIMUM BID: \$100,000

BUILDING SIZE: Approx. 1,275 SF

PIN #: 14-30-106-100-1001

ZONING: C1-2; Neighborhood Commercial District

PROPERTY DESCRIPTION

Formerly the Village Cutting Room. Located on Belmont Avenue near Damen Avenue. Association Dues: \$103.49 monthly

PROPERTY HIGHLIGHTS

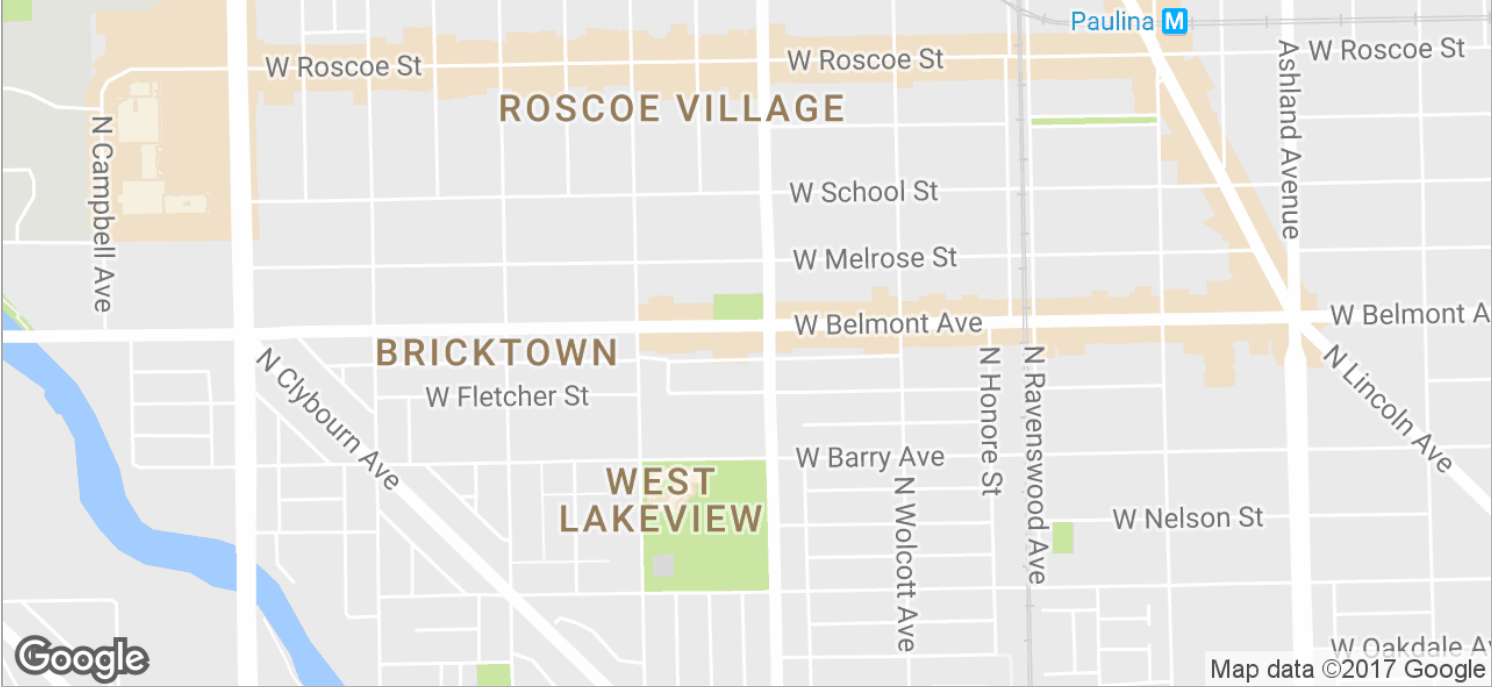
- Online Auction bidding starts Monday February 6, 2017 at 11:00 AM CST and ends Wednesday February 8, 2017 at 11:00 AM CST
- Minimum Bid \$100,000 Plus 6% Buyer's Premium
- Cooperating Brokers Commission 2%
- Pre-Auction Bids Highly Encouraged!

DIANA PETERSON
President
847.509.2757
dianap@awproperties.com
IL #471.004909

FOR AUCTION | RETAIL

BANK OWNED RETAIL CONDO

2009 West Belmont Avenue, Unit 1, Chicago, IL 60618

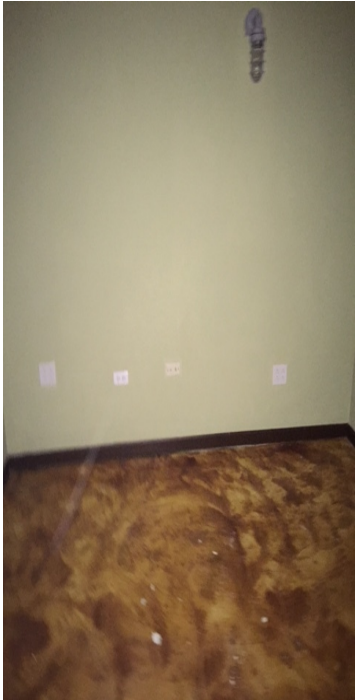


DIANA PETERSON
President
847.509.2757
dianap@awproperties.com
IL #471.004909

FOR AUCTION | RETAIL

BANK OWNED RETAIL CONDO

2009 West Belmont Avenue, Unit 1, Chicago, IL 60618

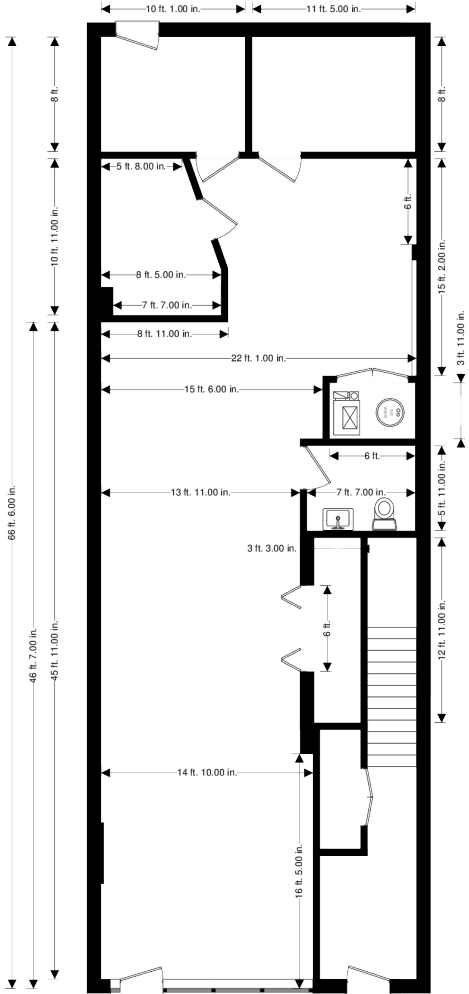


DIANA PETERSON
President
847.509.2757
dianap@awproperties.com
IL #471.004909

BANK OWNED RETAIL CONDO

2009 West Belmont Avenue, Unit 1, Chicago, IL 60618

The accuracy of the information is neither expressly or implicitly warranted and is subject to alteration, additions, and/or withdrawal without further notice



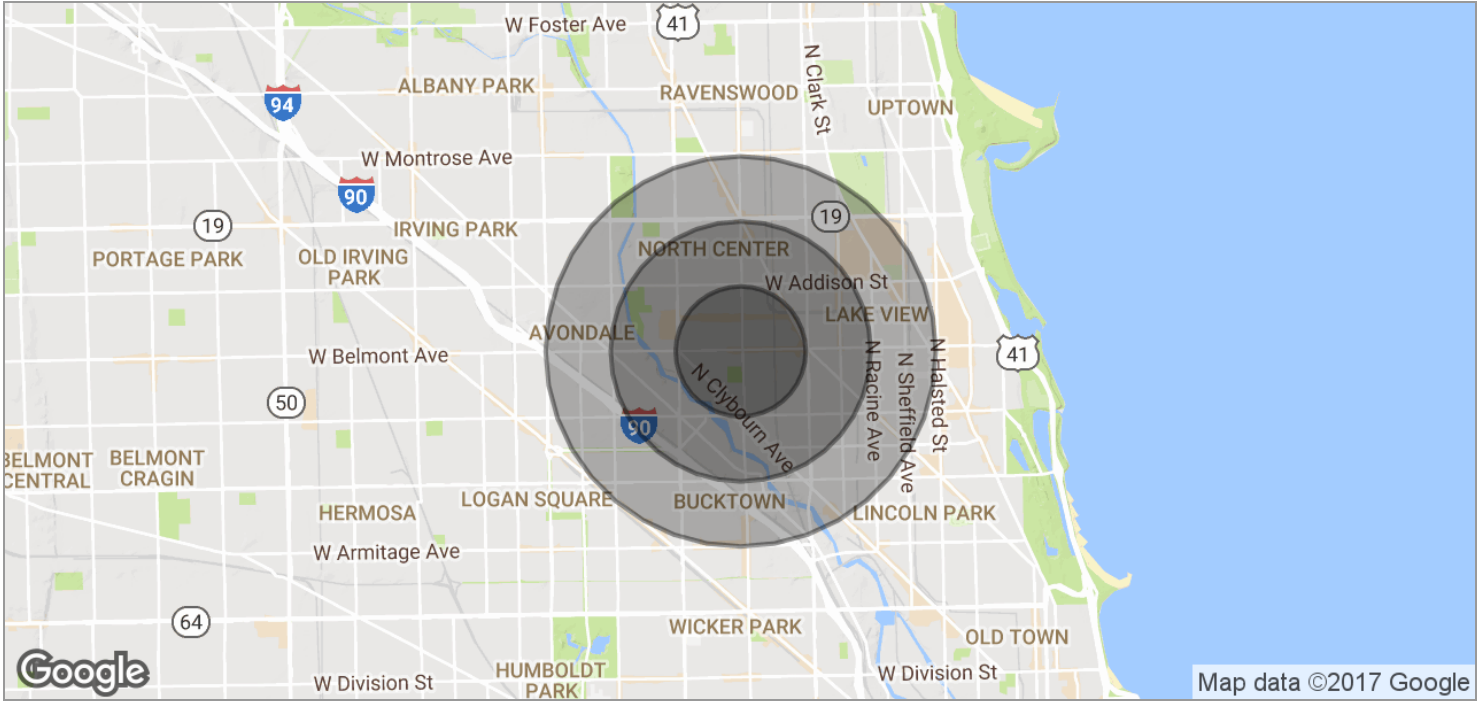
| | | | | | | | |
|-------------------------------------|-------------------------------|--------------|-------------|-------|---------|--------|-----|
| 2009 West Belmont C1 Chicago | | | | SIZE | FSCM NO | DWG NO | REV |
| DRAWN | Just Floorplans Inc - Chicago | | | | | | |
| ISSUED | SCALE | 1/8" = 1'-0" | First Floor | SHEET | 1 OF 1 | | |



DIANA PETERSON
 President
 847.509.2757
 dianap@awproperties.com
 IL #471.004909

BANK OWNED RETAIL CONDO

2009 West Belmont Avenue, Unit 1, Chicago, IL 60618



| POPULATION | 0.5 MILES | 1 MILE | 1.5 MILES |
|---------------------|-----------|-----------|-----------|
| TOTAL POPULATION | 17,067 | 53,104 | 125,512 |
| MEDIAN AGE | 32.5 | 32.1 | 31.8 |
| MEDIAN AGE (MALE) | 32.9 | 32.6 | 32.2 |
| MEDIAN AGE (FEMALE) | 32.3 | 31.9 | 31.7 |
| HOUSEHOLDS & INCOME | 0.5 MILES | 1 MILE | 1.5 MILES |
| TOTAL HOUSEHOLDS | 7,086 | 23,018 | 54,820 |
| # OF PERSONS PER HH | 2.4 | 2.3 | 2.3 |
| AVERAGE HH INCOME | \$135,853 | \$126,209 | \$120,324 |
| AVERAGE HOUSE VALUE | \$605,740 | \$617,314 | \$607,608 |

DIANA PETERSON
 President
 847.509.2757
dianap@awproperties.com
 IL #471.004909