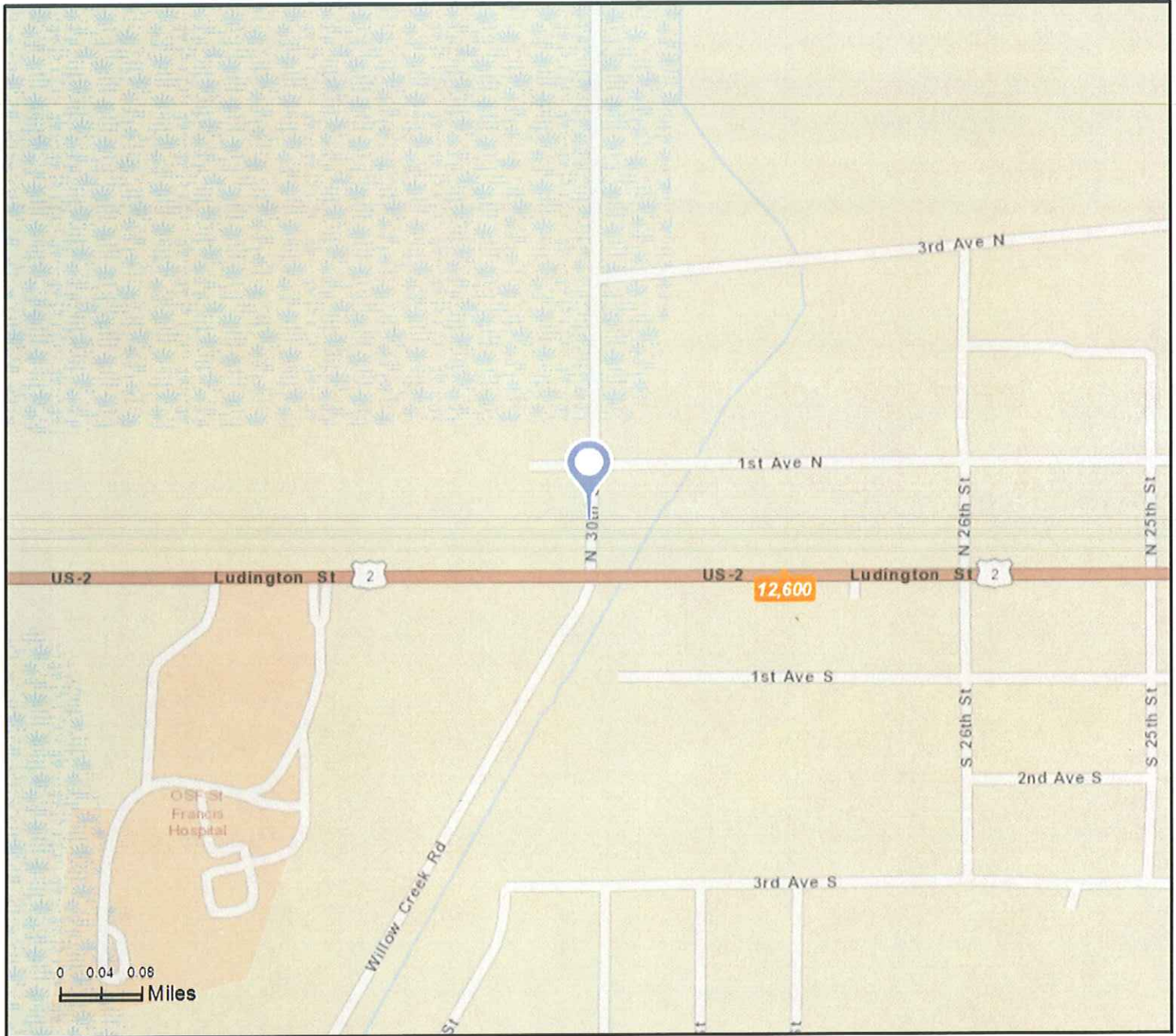




Traffic Count Map - Close Up

101 N 30th St, Escanaba, Michigan, 49829
Rings: 1, 3, 5 mile radii

Prepared by Esri
Latitude: 45.74628
Longitude: -87.09022



- Average Daily Traffic Volume**
- ▲ Up to 6,000 vehicles per day
 - ▲ 6,001 - 15,000
 - ▲ 15,001 - 30,000
 - ▲ 30,001 - 50,000
 - ▲ 50,001 - 100,000
 - ▲ More than 100,000 per day



Source: ©2016 Kalibrate Technologies

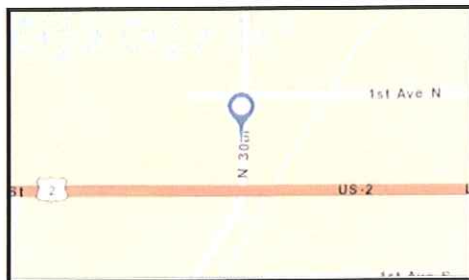
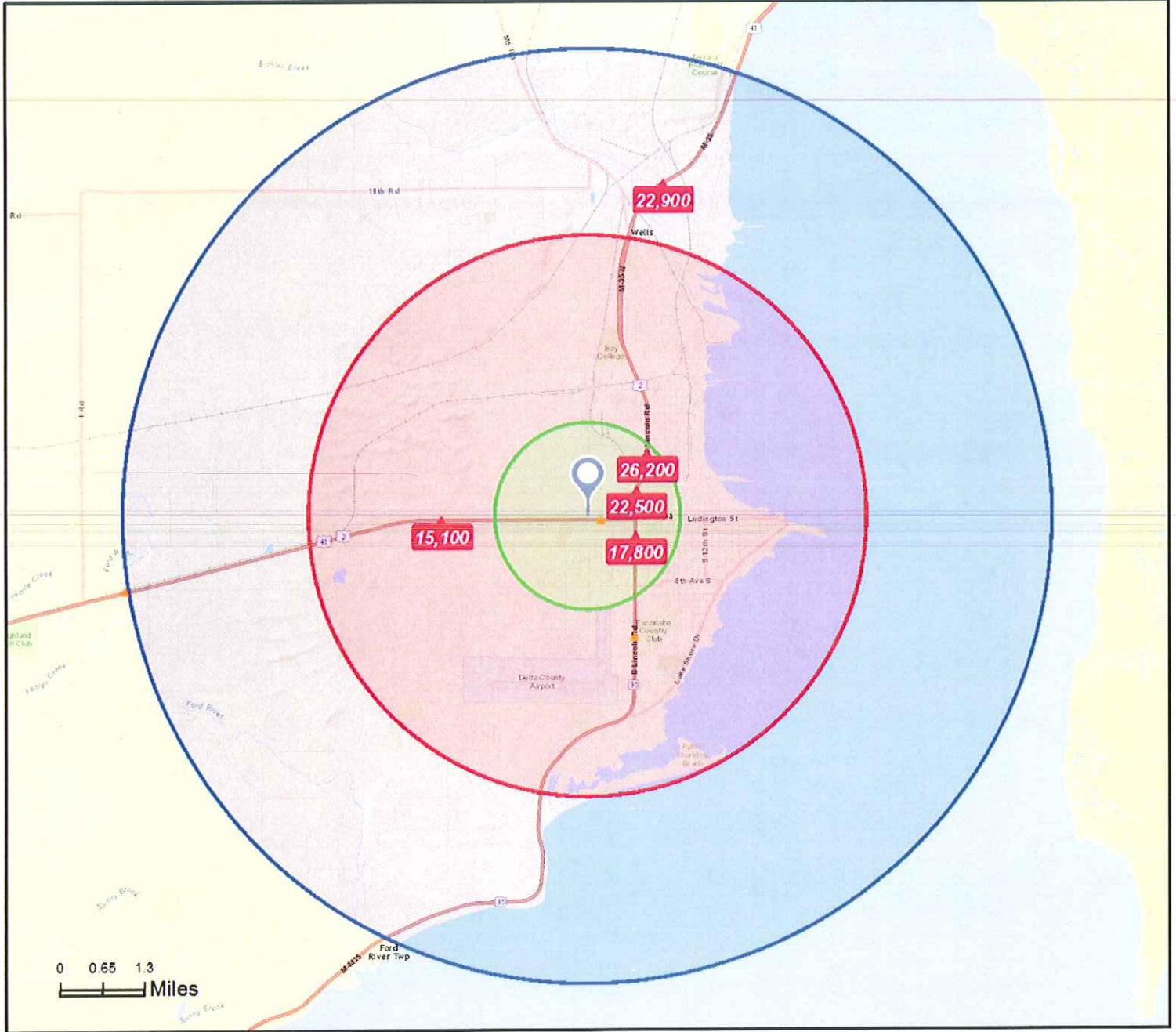
November 14, 2016



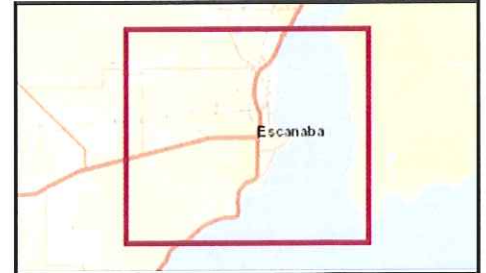
Traffic Count Map

101 N 30th St, Escanaba, Michigan, 49829
Rings: 1, 3, 5 mile radii

Prepared by Esri
Latitude: 45.74628
Longitude: -87.09022



- Average Daily Traffic Volume**
- ▲ Up to 6,000 vehicles per day
 - ▲ 6,001 - 15,000
 - ▲ 15,001 - 30,000
 - ▲ 30,001 - 50,000
 - ▲ 50,001 - 100,000
 - ▲ More than 100,000 per day



Source: ©2016 Kallbrate Technologies

November 14, 2016



Traffic Count Profile

101 N 30th St, Escanaba, Michigan, 49829
Rings: 1, 3, 5 mile radii

Prepared by Esri
Latitude: 45.74628
Longitude: -87.09022

Distance:	Street:	Closest Cross-street:	Year of Count:	Count:
0.14	Ludington St	N 30th St (0.13 miles W)	2003	12,600
0.55	S Lincoln Rd	1st Ave S (0.08 miles N)	2003	17,800
0.59	N Lincoln Rd	3rd Ave N (0.08 miles S)	2003	22,500
0.93	N Lincoln Rd	9th Ave N (0.07 miles N)	2003	26,200
1.39	S Lincoln Rd	14th Ave S (0.18 miles N)	2003	9,600
1.56	US Hwy 2	Ludington St (0.57 miles E)	1996	11,200
1.57	US Hwy 2	Ludington St (0.58 miles E)	2003	15,100
2.23	S Lincoln Rd	Lake Shore (0.14 miles W)	2003	6,800
3.65	US Hwy 2	Dam 17.75 Rd (0.39 miles SW)	2003	22,900
4.17	Lake Shore	State Hwy M35 (0.99 miles W)	2003	6,300

Data Note: The Traffic Profile displays up to 30 of the closest available traffic counts within the largest radius around your site. The years of the counts in the database range from 2016 to 1963. Over 25% of the counts were taken between 2010 and 2016 and over 77% of the counts were taken between 2000 and 2016. Traffic counts are identified by the street on which they were recorded, along with the distance and direction to the closest cross-street. Distances displayed as 0.00 miles (due to rounding), are closest to the site. A traffic count is defined as the two-way Average Daily Traffic (ADT) that passes that location.

Source: ©2016 Kalibrate Technologies

November 14, 2016