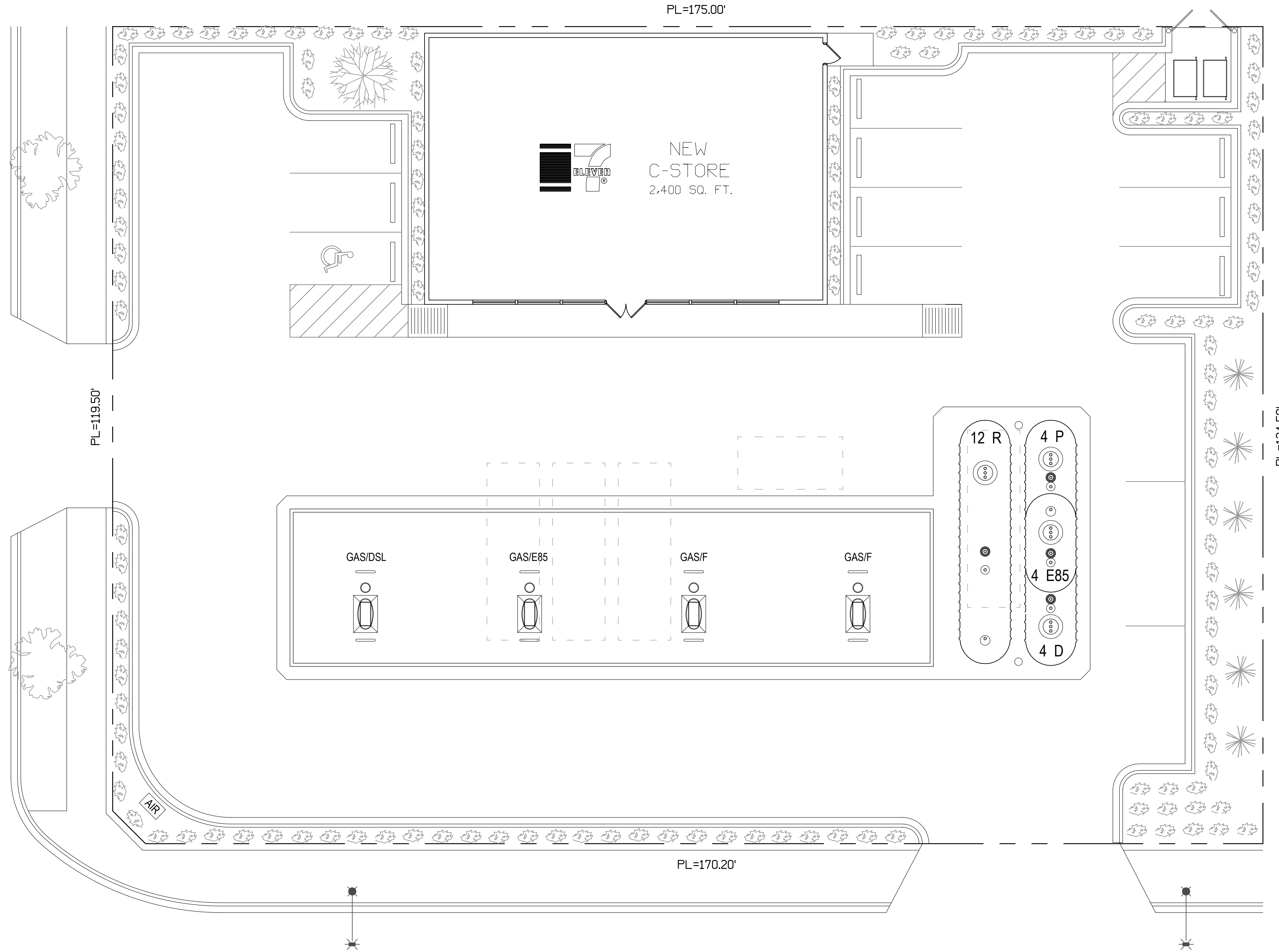




HARVARD AVENUE



HARLEM AVENUE

#	LEGEND
1	XERXES DW FG TANKS (dry) (1-12k, 3-4k)
2	OBSERVATION WELL (typ 2)
3	SPILL MANHOLE WITH OVERFILL PREVENTION
4	DUAL POINT STAGE I VAPOR RECOVERY
5	AUTOMATIC TANK GAUGE
6	INTERSTITIAL TANK SENSOR
7	SUBMERSIBLE PUMP WITH SUMP AND SENSOR
8	2" SW FIBERGLASS VENTS
9	2" DW FG AMERON LCX PRODUCT LINES
10	2" & 3" SW FG STAGE II VAPOR LINE
11	DISPENSER SUMP WITH SENSOR (typ. 4)
12	GILBARCO "ENCORE" BLENDER (typ. 2)
13	GILBARCO BLENDER + E85 (typ. 1)
14	GILBARCO BLENDER + DIESEL (typ. 1)
15	NEW 7 ELEVEN BUILDING
16	NEW 24' x 98' MOBIL CANOPY
17	CONTROL STATION / EMERGENCY SHUT-OFF
18	INTERCOM SYSTEM
19	OUTSIDE EMERGENCY SHUT-OFF (typ. 1)
20	FIRE EXTINGUISHER (4A:60BC) (typ. 4)
21	
22	
23	
24	
25	

General Notes	Yes	No
Tanks and Piping are:		
20' to Property Lines etc...?		X
20' to Storm Sewers etc...?		X
20' to Basements etc...?	X	
300' to any Mineshaft etc...?	X	
85' to any School etc...?	X	
400' to any Potable Wells etc...?	X	

Comments:
ALL TANKS AND PIPING TO BE DOUBLE WALL WITH CONTINUOUS MONITORING OF SECONDARY CONTAINMENT
ALL TANK & DISPENSER SUMPS WILL HAVE SENSORS



FAC. # 2-021373	REVISION :
SCALE : 1"=10'	REVISION :
DRAWN BY : JVG	REVISION :
CHECKED BY :	REVISION :
APPROVED BY :	REVISION :
DATE: 8/7/12	REVISION :
DWG. FS-1	REVISION :
FILE: sch-xm-fp1	REVISION :

