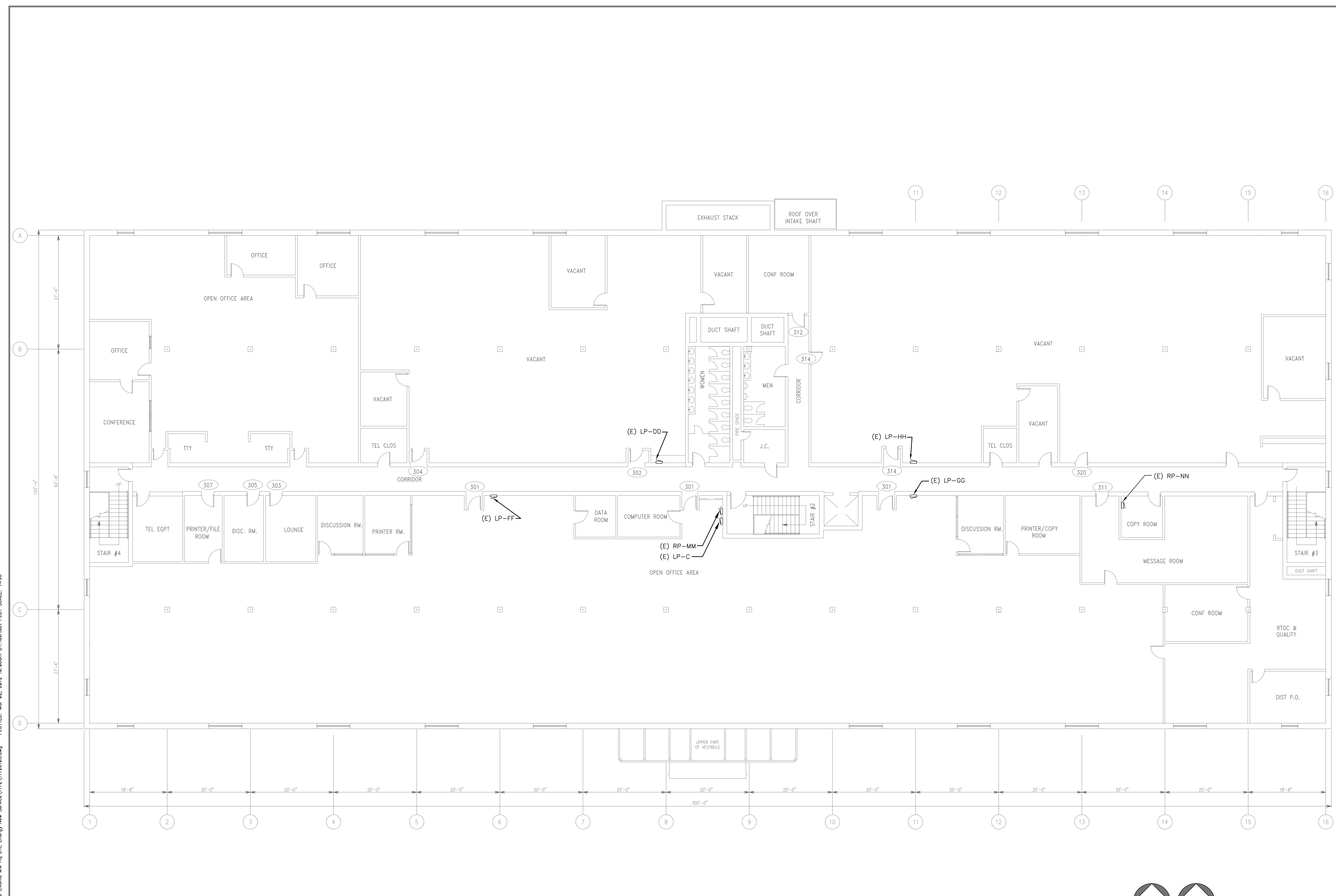
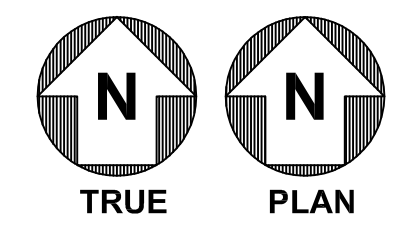


F:\Sector833\Projects\01-00015687-A0 Livonia MW Hq. DTE Energy New Service\1172\1172a103.dwg
 03-02-2012 10:05:54

FILE INFO: F:\Sector833\Projects\01-00015687-A0 Livonia MW Hq. DTE Energy New Service\1172\1172a103.dwg PLOTTED: Mar 02, 2012 10:06am BY: luvrsh Plot SCALE: 1/8"=1'-0"
 XREFS: MODIFIED: Mar 02, 2012 9:47am



UPPER LEVEL FLOOR PLAN
 SCALE: 3/32" = 1'-0"



ISSUE DATE:	11/29/07
FOR:	RECORD DRAWINGS
ISSUED BY:	C&B
ISSUE DATE:	4/18/07
FOR:	REVISION #2
ISSUED BY:	K.T.
ISSUE DATE:	4/09/07
FOR:	REVISION #1
ISSUED BY:	K.T.
ISSUE DATE:	3/13/07
FOR:	ADDENDUM #1
ISSUED BY:	M.J.N.
ISSUE DATE:	12/21/06
FOR:	MDEQ SUBMITTAL
ISSUED BY:	K.T.

CONSULTANT STAMP

Carter Burgess
 CARTER & BURGESS CONSULTANTS, INC.
 30800 TELEGRAPH RD., SUITE 4900
 BINGHAM FARMS, MICHIGAN 48025

C&B JOB NUMBER:
371172

REVISIONS / AUTHORIZATIONS			
NO.	REVISIONS / AUTHORIZATIONS	DATE	BY
1	85% REVIEW	12/8/06	K.T.
2	OWNER REVIEW	12/15/06	K.T.
3	OWNER REVIEW	02/15/07	K.T.
4	CONSTRUCTION	02/22/07	K.T.

PROPRIETARY AT&T INFORMATION

NOT FOR GENERAL USE OR DISCLOSURE OUTSIDE OF AT&T
 THIS INFORMATION MAY ONLY BE USED BY AUTHORIZED PERSONNEL OF
 THE LOCAL GOVERNMENT AGENCY IN CONNECTION WITH APPLICATION FOR
 PERMITS AND AUTHORIZATIONS FOR BUILDINGS, CONSTRUCTION, AND/OR
 ZONING CHANGES.

DRAWINGS PREPARED FOR

at&t CORPORATE
 REAL ESTATE

PROJECT TITLE:
AST REPLACEMENT
 31100 PLYMOUTH ROAD
 LIVONIA, MI

CLLC M64228

SHEET TITLE:
**UPPER LEVEL
 FLOOR PLAN**

AT&T PROJECT NUMBER: M10057	DATE:	SCALE: NOTED
AT&T AUTHORIZATION:	DRAWN BY: M.N.	CHECKED BY: W.D.
AUTHORIZATION SIGNATURE	SHEET: - OF: - SHEETS	SHEET NO.
	AT&T DRAWING NO.:	E1.03

v1.0 COPYRIGHT © 2006 by Carter & Burgess Consultants, Inc.