

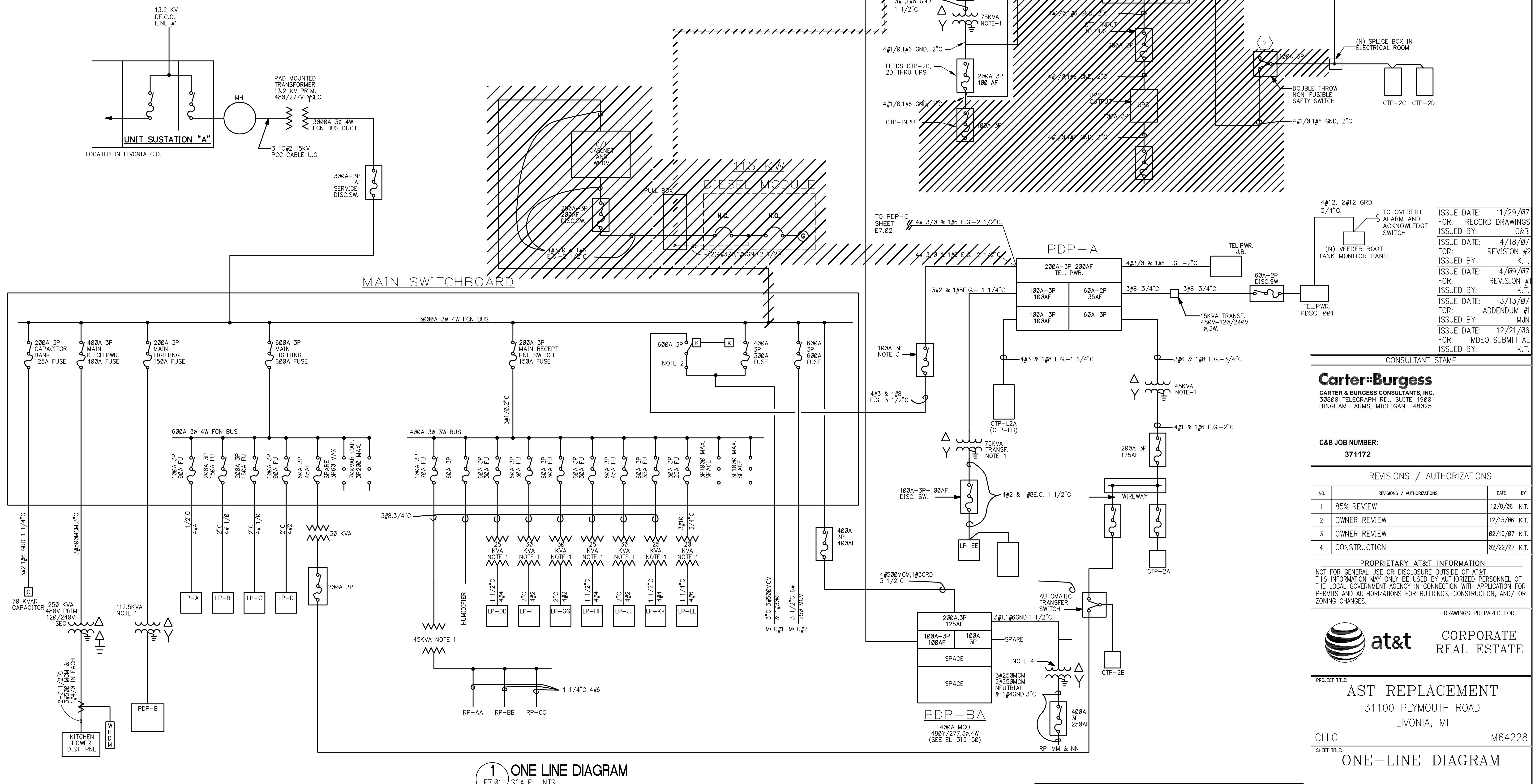
**NEW WORK KEY NOTES:**

- NOT USED.
- REMOVE TRANSFER SWITCH FOR SPACE FOR SPLICE BOX.
- NOT USED.
- REMOVE EXISTING UPS AND ASSOCIATED WIRING. COORDINATE REMOVAL WITH OWNERS CONSTRUCTION REPRESENTATIVE.

**EXISTING NOTES:**

- TRANSFORMER VOLTAGE - 480V 208Y/120V 3Ø.
- NON-FUSED, SOLID COPPER BUS BARS INSTALLED. THIS STANDBY POWER CIRCUIT IS FUSED IN PANEL PDP-A.
- THIS SWITCH SHOULD BE NORMALLY OPEN. CLOSE SWITCH ONLY TO PROVIDE STANDBY POWER TO MCC1.
- 75KVA, K-FACTOR RATED (K-13) 480V - 208Y/120V, 3Ø, 4W

	400A 3P MAIN KITCHEN POWER	200A 3P LP-B	100A 3P RP-AA, BB, CC		
600A 3P MCC #2	600A 3P MAIN LIGHTING	200A 3P LP-C	LP-DD 60A 3P	LP-FF 60A 3P	400A-3P SPACE COMM'L
400A 3P MCC-1 DIESEL PWR	200A 3P MAIN FOR RECEPT. PANELS	100A 3P LP-A	LP-HH 60A 3P	LP-GG 60A 3P	400A-3P, 250AF 26Ø ATS/PDP-C COMM'L
400A 3P MCC #1	200A 3P 112.5 KVA PDP-B	100A 3P LP-D	LP-JJ 60A 3P	LP-KK 60A 3P	400A-3P, 400AF SERVES PDP-BA COMM'L
		60A 3P SPARE	60A 3P CTP-2B	LP-LL 3ØA 3P	SPARE FOR 400A-3P COMM'L
		200A 3P 125A FUSES TO KVAR CAP		HUMIDIFIER 60A 3P	
SPACE		SPACE	SPACE	SPACE	SPACE



**1 ONE LINE DIAGRAM**  
E7.01 SCALE: NTS

THE EXISTING EQUIPMENT SHOWN ON ONE-LINE DIAGRAM NOT REFLECT EXISTING CONDITIONS. ELECTRICAL CONTRACTOR SHALL FIELD VERIFY EXISTING ELECTRICAL DISTRIBUTION SYSTEM AS APPLICABLE PRIOR TO ADDING NEW LOADS OR MAKING ANY MODIFICATIONS TO THE EXISTING SYSTEM.

ISSUE DATE: 11/29/07  
FOR: RECORD DRAWINGS  
ISSUED BY: C&B  
ISSUE DATE: 4/18/07  
FOR: REVISION #2  
ISSUED BY: K.T.  
ISSUE DATE: 4/09/07  
FOR: REVISION #1  
ISSUED BY: K.T.  
ISSUE DATE: 3/13/07  
FOR: ADDENDUM #1  
ISSUED BY: MJN  
ISSUE DATE: 12/21/06  
FOR: MDEQ SUBMITTAL  
ISSUED BY: K.T.

**CONSULTANT STAMP**

**Carter-Burgess**  
CARTER & BURGESS CONSULTANTS, INC.  
30800 TELEGRAPH RD., SUITE 4900  
BINGHAM FARMS, MICHIGAN 48025

**C&B JOB NUMBER:**  
371172

REVISIONS / AUTHORIZATIONS			
NO.	REVISIONS / AUTHORIZATIONS	DATE	BY
1	85% REVIEW	12/8/06	K.T.
2	OWNER REVIEW	12/15/06	K.T.
3	OWNER REVIEW	02/15/07	K.T.
4	CONSTRUCTION	02/22/07	K.T.

**PROPRIETARY AT&T INFORMATION**  
NOT FOR GENERAL USE OR DISCLOSURE OUTSIDE OF AT&T  
THIS INFORMATION MAY ONLY BE USED BY AUTHORIZED PERSONNEL OF  
THE LOCAL GOVERNMENT AGENCY IN CONNECTION WITH APPLICATION FOR  
PERMITS AND AUTHORIZATIONS FOR BUILDINGS, CONSTRUCTION, AND/OR  
ZONING CHANGES.

DRAWINGS PREPARED FOR

**at&t** CORPORATE  
REAL ESTATE

PROJECT TITLE:  
**AST REPLACEMENT**  
31100 PLYMOUTH ROAD  
LIVONIA, MI

CLLC M64228

SHEET TITLE:  
**ONE-LINE DIAGRAM**

AT&T PROJECT NUMBER: M10057	DATE: --	SCALE: N.T.S.
AT&T AUTHORIZATION:	DRAWN BY: MJN	CHECKED BY: W.D.
AUTHORIZATION SIGNATURE:	SHEET: -- OF: -- SHEETS	SHEET NO. E7.01

v1.0 COPYRIGHT © 2006 by Carter & Burgess Consultants, Inc.

FILE INFO: \Sector833\Projects\AST\1172\1172E701.dwg PLOTTED: Mar 02, 2012 10:07am BY: luvireh PLOT SCALE: 1=96  
 XREFS: MODIFIED: Mar 02, 2012 9:49am  
 F:\Sector833\Projects\AST\1172\1172E701.dwg  
 03-02-2012 10:07:41